

E Series User Manual

1、 Introduction

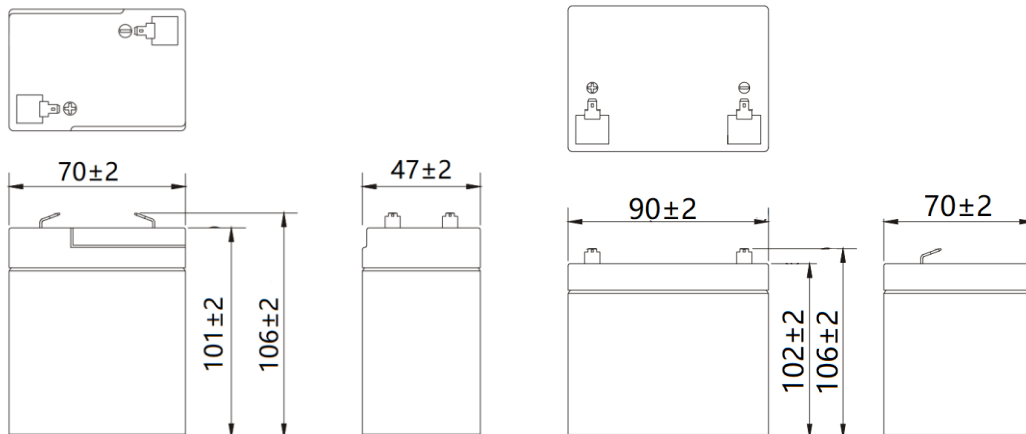
E series adopts LifePO4 battery with the highest cost performance and self-designed BMS system. IP65 protection, support parallel use, is an ideal choice for outdoor, small energy storage, ships and other fields.

BMS is built into the battery system, which is responsible for collecting and analyzing the voltage, temperature and current of the single cell. It has the functions of over-voltage protection, under-voltage protection, high temperature protection, low temperature protection, short circuit protection and cell balance.

2、 Overview

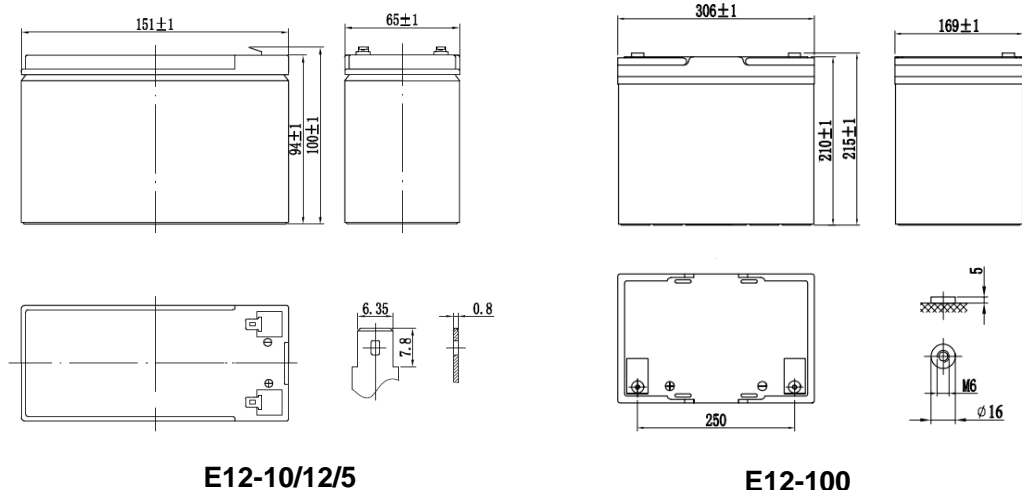
Model	E6-6	E12-5	E12-6	E12-10	E12-12	E12-100	E12-200	E12-300	E12-400	E48-100
Nominal Voltage	6.4V	12.8V								51.2V
Capacity	6Ah	5Ah	6Ah	10Ah	12Ah	100Ah	200Ah	300Ah	400Ah	100AH
Cell	3.2V6Ah	3.2V6Ah	3.2V6Ah	3.2V5Ah	3.2V6Ah	3.2V100Ah	3.2V100Ah	3.2V100Ah	3.2V100Ah	3.2V100Ah
Cells Grouping	2S1P	4S1P	4S1P	4S2P	4S2P	4S1P	4S2P	4S3P	4S4P	16S1P

3. Dimension:



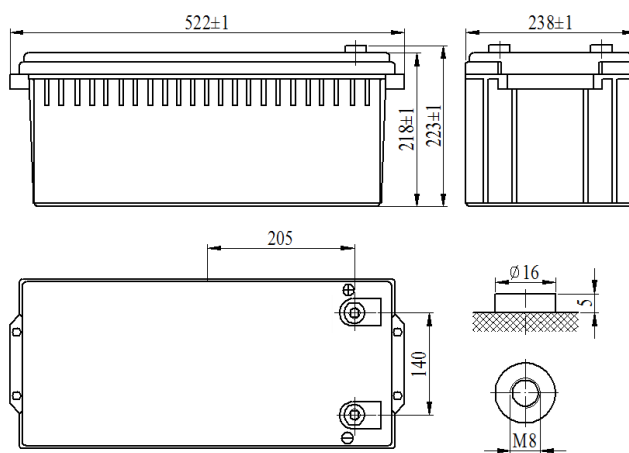
E6-6

E12-6



E12-10/12/5

E12-100



E12-200/300/400/E48-100

4. Parameter

Model	E6-6	E12-5	E12-6	E12-10	E12-12	E12-100	E12-200	E12-300	E12-400	E48-100
Rated Voltage	6.4V	12.8V	12.8V	12.8V	12.8V	12.8V	12.8V	12.8V	12.8V	51.2V
Rated Capacity	6Ah	5Ah	6Ah	10Ah	12Ah	100Ah	200Ah	300Ah	400Ah	100Ah
Rated Energy	38.4Wh	64Wh	76.8Wh	128Wh	153.6Wh	1.28KWh	2.56KWh	3.84KWh	5.12KWh	5.12KWh
Maximum Charging Current	6A	5A	6A	10A	12A	100A	200A			100A
Maximum Discharging Current	18A	15A	18A	20A	24A	100A	200A			100A
Discharge Cut-off Voltage	5.0V	10.0V				11.2V				44.8V
Charging	6.8~6.9V	13.6~13.8V								54.4~55.2

Voltage										
Total Weight(Kg)	0.35Kg	0.6kg	0.7Kg	1.3Kg	1.3kg	11.5kg	20.5kg	28.5kg	36.5kg	38.5kg
Internal Resistance Fully Charged@ 25°C	≤50m Ω	≤50m Ω	≤50m Ω	≤30m Ω	≤ 30m Ω	≤ 10m Ω	≤ 8m Ω	≤ 6m Ω	≤4m Ω	≤5m Ω
Thermal Management	Nature cooling									
Operating Humidity	60±25%R.H.									
Operating Temperature	Charging 0~50°C									
	Discharging -25°C~65°C									

5、 Performance

- High acquisition of voltage data collection (5mv).
- Customized BMS function and parameter.
- Intelligent equalization management.
- Over Charging, Over Discharging, Over Temperature, Short Circuit Protection.
- This BMS supports a matrix of 6 battery in parallel.

6、 Installation Guide

6.1 Preparation

Before installation, please read all safety information provided in this document. If you have any questions about operation and safe use of the battery system, please contact the technical support engineer immediately for a free consultation.

Before Operation:

- Qualified electric worker qualification is mandatory.
- Remove all metal items, such as jewelry, watch, pen etc.
- To ensure the safety of construction personnel and equipment, disconnect the battery pack from the operating equipment during wiring.
- Pay attention to the terminal voltage polarity of the battery module.
- Make sure installation tools insulating and use tools correctly.
- Follow the connection port description and system connection diagram.
- It is absolutely forbidden to plug and unplug when the battery is working. Necessary

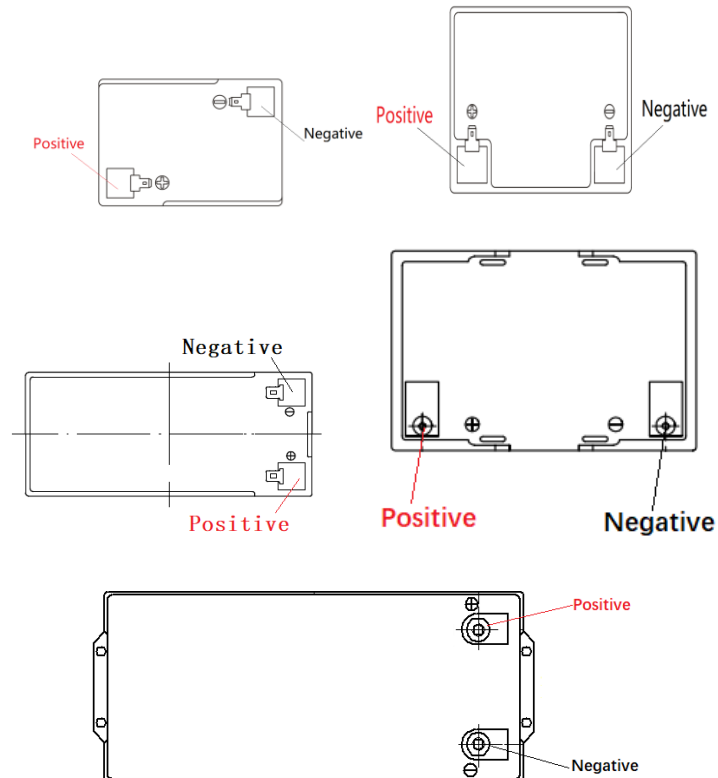
operation should be done after the power supply is disconnected.

- Before the formal operation, ensure whether the power terminals are properly connected and tighten the terminals; When it is necessary to measure, be careful to use instruments and tools, to avoid short circuit and other accidents.
- It is strictly prohibited to disassemble the battery without permission of the professional technician from manufacture.

6.2 Installation Tools

Torque Wrench	
Cross Screwdriver	
Insulating Gloves	
Multimeter	

6.3 Appearance



6.4 Battery Connection

To connect in series or /and in parallel, batteries should meet below conditions:

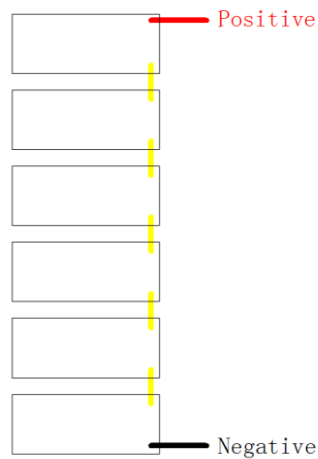
- the same battery capacity (Ah).
- from same brand (as lithium battery from different brands has their special BMS).
- purchased in near time (within one month).

6.4.1 Two Necessary Steps Before Connecting

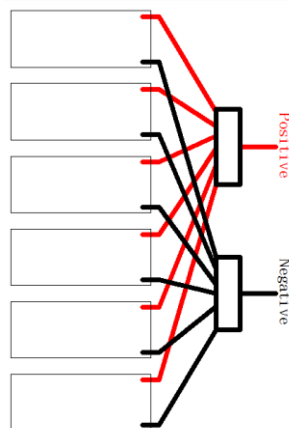
These two steps are necessary in order to reduce the voltage difference between batteries, and through these, the battery system can perform the best of it in series and in parallel.

Firstly, fully charge your 6 batteries separately. Secondly, leave them together for 12-24hrs, connect your six batteries one by one in series. And then, you can connect your batteries in parallel. This battery BMS supports a matrix of 6 battery in series X 6 battery in parallel. A total of 36 batteries in the matrix (12V series) .

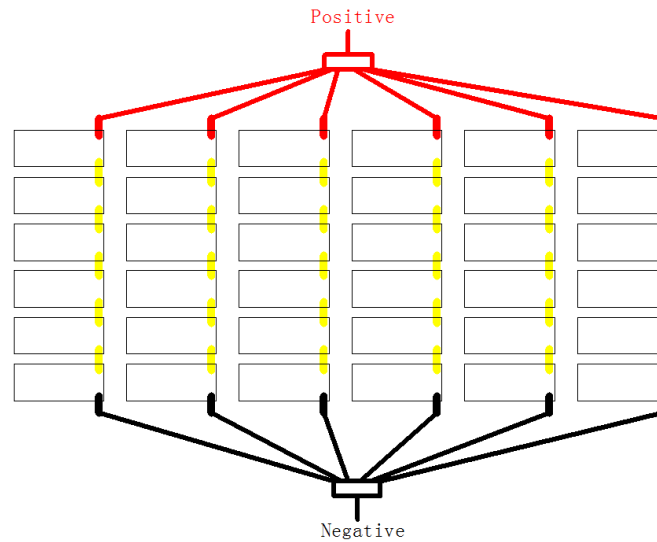
6.4.2 Battery Series (12V series):



6.4.3 Battery Parallel (12V series):



6.4.4 Battery Series and Parallel (Max 6S6P) (12V series):



7、 Attention

- Charging current shall be less than the maximum charging current specified in the data sheet. Charging current exceeding the recommended current may damage the battery.
- The discharge current shall be less than the maximum discharge current specified in the product specifications; Discharge current bigger than the recommended current may damage the battery.
- Non-professional personnel is not allowed to disassemble the battery.
- Reverse charging the battery is strictly prohibited.
- Battery pack should not be used or placed at high temperature. It will cause overheat, function failure or shorter life.
- Battery pack should be placed in dry and cool environment when it is not in use. Immersing into water is prohibited.
- It is strictly prohibited to install and disassemble the battery pack when it is live.
- For optimum performance, you must charge at 14.6V (12V Series) /48.4V (48V Series) . If you do not, you will not be able to reach the full usable capacity of the battery.
- To ensure the best performance of the battery when stored for a long time, the battery should be charged and discharged every three months.
- After the battery discharge protection, it can be removed by the following ways:
 1. Let the battery stand for 15-20 min

The battery will be automatically unprotected after standing for 15-20 min.

2. Use the charger with OV charging function

(It can charge the battery starting from 0V) to charge the battery. After fully charged, the battery can be used normally.

3. Use another 12V/48V lithium battery with same capacity to connect in parallel with the battery and put them aside for over 12hrs. After that, fully charge the battery and it can be used normally.

● If solar charging is used, please set the regulator to the charging mode of lithium battery

When charged with controller, and the controller output is used to connect load:

It is recommended that the controller is set as below parameters to avoid the battery fail to recover when the BMS cut off the battery for protection after a continuous small current discharge.

	12V	24V
Overcharge Protection Voltage	14.6V	29.2V
Overcharge Recovery Voltage	14.2V	28.4V
Over-discharge Protection Voltage	11.2V	20.0V
Over-discharge Recovery Voltage	11.6V	21.2V

The above settings can ensure that the controller triggers the protection first instead of the battery BMS, which can prolong the service life of the battery.